

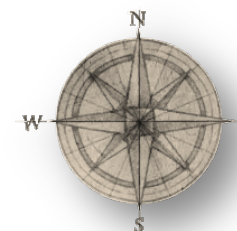
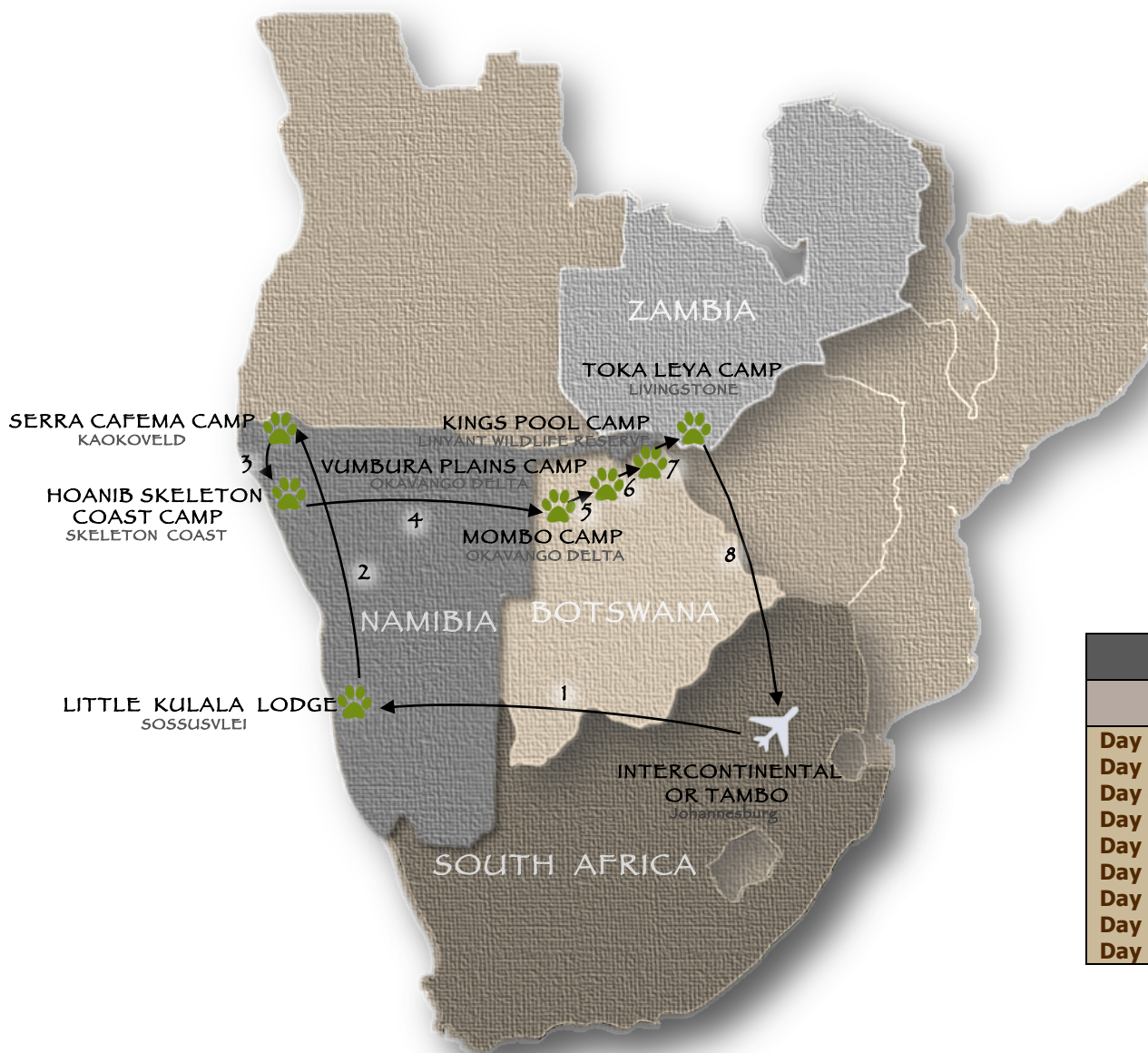
Private Plane Safari

Namibia and Botswana



BEAT ABOUT THE BUSH TOURISM SERVICES

Website: www.beataboutthebush.co.za **E-mail:** safaris@beataboutthebush.co.za **Tel:** +27 83 442 0652



| LEGEND: | |
|---------|---------------------------------|
| | Game Reserves/National Parks |
| | Arrival & Departure Destination |

| TRIP SUMMARY: 14 NIGHTS / 15 DAYS | |
|-----------------------------------|--|
| NAMIBIA AND BOTSWANA | |
| Day 1 | InterContinental O.R. Tambo Airport Hotel, Johannesburg |
| Day 2 & 3 | Little Kulala Lodge, Kulala Wilderness Reserve, Sossusvlei |
| Day 4 & 5 | Serra Cafema Camp, Marienfluss Conservancy, Kaokoveld |
| Day 6 & 7 | Hoanib Skeleton Coast Camp, Skeleton Coast |
| Day 8 & 9 | Mombo Camp, Okavango Delta |
| Day 10 & 11 | Vumbura Plains Camp, Okavango Delta |
| Day 12 & 13 | Kings Pool Camp, Linyant Wildlife Reserve |
| Day 14 | Toka Leya Camp, Livingstone |
| Day 15 | Depart for home from Johannesburg International Airport |

Safari starts in Johannesburg, South Africa

Johannesburg – InterContinental O.R. Tambo Airport Hotel – 1 Night

Included: All meals, accommodation

Johannesburg

Johannesburg is the second largest city in Africa. Known as the greatest gold-mining area on earth, this vibrant city is not just an industrial giant; it is the heart of the country's economy. From traditional 'muti' (medicine) shops to exclusive boutiques in upmarket malls, theatres, museums, cultural villages, restaurants, beautiful walks in indigenous gardens and more, Johannesburg is a diverse cultural melting pot, deserving of its name of 'iGoli' or 'City of Gold'.

InterContinental O.R. Tambo Airport Hotel

This 5-star hotel is conveniently situated at the airport hub and is only a 5-minute walk from the arrivals hall. The well-appointed rooms are tastefully decorated with subtle influences of Africa. Spacious showers with massage showerheads, comfy king beds with fluffy duvets, blackout curtains and soundproofing ensure a night of relaxation. [InterContinental O.R. Tambo Airport Hotel website](#)



Private charter flight to Kulala Wilderness Reserve.

Kulala Wilderness Reserve – Little Kulala Lodge – 2 Nights

Included: All meals, local beverages, laundry service, daily activities, private guide & private vehicle

Sossusvlei – Namib-Naukluft National Park

One of the oldest, driest and most pristine areas on Earth, the Namib Desert is a world of vast spaces, endless horizons and dramatic desert-scapes. Known as “The Living Desert”, the dunes of the Namib abound with specially adapted flora and fauna. The plains and dry watercourses are home to oryx, springbok, zebra, ostrich and giraffe. Rising to over 1 000ft, some of the tallest dunes in the world tower above Sossusvlei, a salt-encrusted pan.

The Kulala Concession on which the lodge is situated encompasses over 80 000 acres of remote desert landscape to the east of (and with private entrance to) the National Park’s famous Sossusvlei area. Activities include morning visits to the massive red dunes and salt pans at Sossusvlei, nature walks and nature drives. Activities at extra cost include hot air balloon trips (weather dependent), horse-riding and quad-bike rides through the desert.

Little Kulala is a luxurious desert retreat situated in the private 27 000-hectare (67 000-acre) Kulala Wilderness Reserve. Accommodation consists of 11 climate-controlled, thatched “kulalas” (the word means ‘to sleep’) which merge impeccably into the desert landscape, each with private plunge pool, both indoor and outdoor showers and a rooftop star bed for romantic star gazing. An elegant entertainment area includes a library, wine cellar, craft boutique, lounge and dining areas. Activities include game drives as well as a walk to Dead Vlei and the Sesriem Canyon. [Little Kulala Lodge Website](#)



Private charter flight to Kaokoveld.

Marienfluss Conservancy, Kaokoveld – Serra Cafema Camp – 2 Nights

Included: All meals, local beverages, laundry service, daily activities, private guide & private vehicle

Marienfluss Conservancy

This protected conservation area is the result of a partnership between local indigenous inhabitants and private enterprise to ensure sustainability of the ecosystem, protect wildlife and empower people. The area is a mammoth 600 000 acres and is dominated by soft sands, ancient fold mountains and granite outcrops. Wildlife is sparse but the sheer feeling of isolation, the unique birdlife and cultural possibilities make this a destination to be remembered.

Serra Cafema Camp

Undoubtedly one of the most remote camps in southern Africa, Serra Cafema is located in the extreme northwest of Namibia on the banks of the Kunene River. Serra Cafema is an intimate, peaceful camp inspired by the area's Himba people, with a unique mix of rustic and luxury elements. Accommodation consists of eight en-suite riverside wood, canvas and thatched villas on spacious, elevated decks. The main area comprises indoor and outdoor dining areas, a sunken lounge, library, curio shop and a swimming pool. Activities include nature walks, birding, boating and carefully guided drives and quad-bike excursions. A big highlight of this area is the possibility of seeing and learning about the Himba people (if they are in the area), arguably the last truly nomadic people in southern Africa. [Serra Cafema Camp Website](#)



Private charter flight to the Skeleton Coast.

Skeleton Coast – Hoanib Skeleton Coast Camp – 2 Nights

Included: All meals, local beverages, laundry service, daily activities, private guide & private vehicle

Skeleton Coast

This treacherous coast - a foggy region with rocky and sandy coastal shallows - has long been a graveyard for unwary ships and their crews, hence it's forbidding name. This protected area stretches from Sandwich Harbour, south of Swakopmund, to the Kunene River, taking in around 2 million hectares of dunes and gravel plains to form one of the most inhospitable but hauntingly beautiful places on the planet.

Hoanib Skeleton Coast Camp is scenically located in a broad valley at the confluence of two tributaries of the dry Hoanib River in the northern part of the private Palmwag Concession. Its location thus straddles the Palmwag area and the iconic Skeleton Coast National Park, in one of the most remote areas of the Kaokoveld. The camp consists of seven large tents and one family unit, each comprising stylish en-suite bedrooms with shaded outdoor decks. Flanked to the east and west by rugged hills, the camp looks out over stunning, starkly beautiful scenery and offers guests all the luxuries and amenities for an unforgettable stay. Activities include drives in search of desert elephants and other wildlife in the riverbed, nature walks, and a day-trip to the coast that will reveal the 'roaring dune', an oasis and a Cape fur seal colony. [Hoanib Skeleton Coast Camp Website](#)



Private charter flight to the Mombo Concession in the Okavango Delta.

Okavango Delta – Mombo Camp – 2 Nights

Included: All meals, local beverages, laundry service, daily activities, private guide & private vehicle

Okavango Delta

This water wonderland is one of the true jewels of Africa and a photographer's dream with a flood season area of over 3 million acres (1.2 million ha) of seasonal floodplains, permanent lagoons and lush tree islands. Over 450 species of birds and a myriad of game species are found in the area. The core protected area of the Okavango is the Moremi Game Reserve which is surrounded by a 'buffer-zone' of wildlife management areas. Moremi Game Reserve was the first nature reserve proclaimed by an African tribe on their own land and is dominated by the 250 000 acre (101 000 ha) Chief's Island.

Mombo Camp

Mombo Camp is situated on Mombo Island, adjoining the northern tip of Chief's Island, and has access to 40 000 acres (16 000 ha) of prime wildlife area with some of the best wildlife viewing in Botswana year round. At Mombo the aim is to offer guests a wilderness experience that evokes the magic and mystique of the great African tented safaris of the early part of the last century, while providing modern day comforts. The main area is shaded beneath massive jackalberry trees and is comprised of a dining area, a bar and a lounge with a campfire in the centre. Seven luxurious safari tents on timber decks are furnished with a minibar and coffee station, an en-suite bathroom, fans and charging stations. Finally, each tent has a small lounge to relax and enjoy the views. Rules within the Moremi Reserve dictate that no night drives are allowed. Water levels are too low for boating activities. [Mombo Camp Website](#)



Private charter flight to Vumbura Plains Camp in the Okavango Delta – followed by a road transfer to the lodge.

Okavango Delta – Vumbura Plains Camp – 2 Nights

Included: All meals, local beverages, laundry service, daily activities, private guide & private vehicle

Vumbura Plains Camp

Vumbura Plains (pronounced *Vum-bera*) is a luxury tented camp situated in a private concession bordering the Moremi Game Reserve in the extreme north of the Okavango Delta. The concession, which is leased from the neighbouring community, includes a wide variety of habitats, diverse wildlife and an enormous traversing area of 130 000 acres (60 000 ha). The main activity at Vumbura Plains is game viewing in open 4X4 vehicles. Walks, mokoro (dug-out canoe) trips with a poler guide and boating in aluminium boats with outboard motors are also offered, enabling a closer and more unique wildlife experience. With lion, leopard, elephant, cheetah, African buffalo and all the plains animals (including rare antelope like red lechwe and sable), this camp offers an excellent all round wildlife experience in a remote and private part of the Okavango.

Vumbura Plains Camp comprises two separate seven-roomed satellite camps, each with its own raised dining, lounge and bar area tucked beneath a canopy of cool, shady, indigenous trees. Each large, luxurious room is raised off the ground on wooden decks and comprises a bedroom, lounge, shower and full en-suite bathroom. Outdoor showers are standard. The rooms are 'open' on three sides to feature magnificent vistas across the Okavango Delta floodplains. Each room also has a plunge pool and outdoor 'sala' – a comfortable area to lie and relax. [Vumbura Plains Camp Website](#)



Private charter flight to Linyanti Wildlife Reserve.

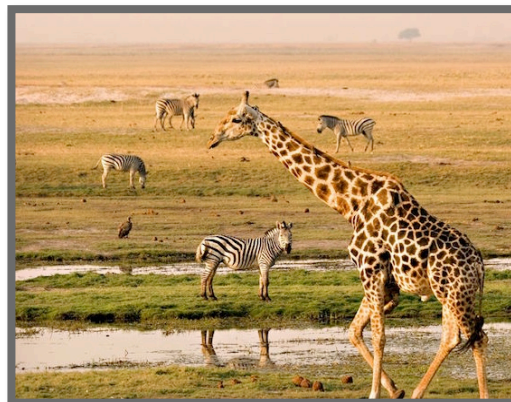
Linyanti Wildlife Reserve – Kings Pool Camp – 2 Nights

Included: All meals, local beverages, laundry service, daily activities, private car & private guide

Linyanti Wildlife Reserve

The Linyanti Wildlife Reserve is a private reserve bordering Chobe National Park's western boundary. The enormous reserve covers 125 000 ha (308 000 acres). There are a limited number of lodges and camps here, which creates an unrivalled atmosphere of remoteness and seemingly unlimited expanse. Although the concession lies within the greater Chobe National Park, it has a distinctly different ecosystem. The reserve comprises a varied and diverse selection of habitats that include floodplains and marshes, riverine forests, dry woodlands, grasslands, exotic palm islands and scrub vegetation, all of which support a high biodiversity of mammal species. With such an abundance of mammals, predators are prevalent in Linyanti including lion, cheetah, hyena, leopard and the endangered African wild dog. The area also harbours one of the densest dry season concentrations of elephant in the world.

Kings Pool Camp overlooks the Kings Pool Lagoon in the Linyanti Wildlife Reserve. The camp's nine luxurious tents (including one family unit) each boast a large bedroom area and lounge leading onto a veranda with a private plunge pool and thatched sala from which to soak up the views. The en-suite bathrooms have double showers and hand-basins, as well as an outdoor shower. The spacious main area comprises a lounge, dining room and a convivial bar beautifully set on expansive raised decks. There is also a pool and an open-air 'kgotla' (meeting place) for evening dining under the stars. [Kings Pool Camp Website](#)



Private charter flight to Livingstone, Zambia – followed by a road transfer to the lodge.

Adjacent to Mosi-oa-Tunya National Park, Livingstone – Toka Leya Camp – 1 Night

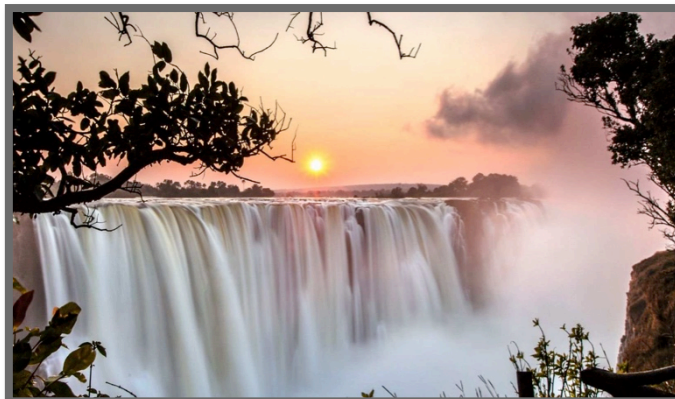
Included: All meals, local beverages, laundry service, daily activities, helicopter flight, private guide & private vehicle

Livingstone and Mosi-oa-Tunya National Park

The town of Livingstone has become Zambia's tourist capital. Livingstone is situated a short distance from Victoria Falls, the largest single waterfall in the world by volume in peak flood and a member of the old Seven Natural Wonders of the World. Columns of spray can be seen from many miles away as 750 000 tons of water plummet over the edge every minute at the height of flood season. The Falls are 1 mile (1,5km) wide and average 330 feet (100m) high. Mosi-oa-Tunya National Park abuts the town and is home to a wide diversity of animals including the country's only white rhino. Most visitors are drawn to Livingstone for Victoria Falls, but the town has attractions of its own, most notably an interesting colonial history combined with a very African ambience.

Toka Leya Camp

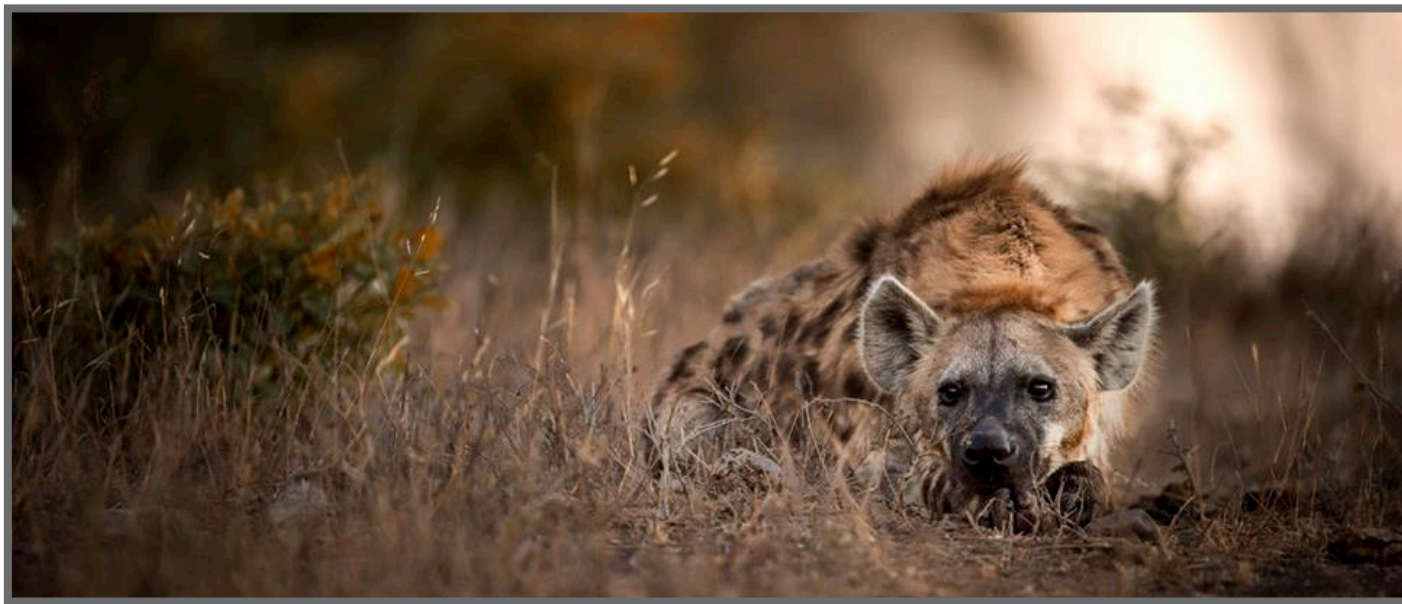
Toka Leya Camp overlooks the mighty Zambezi River and some of its islands and is on the unfenced border of the National Park. The camp consists of 12 spacious en-suite safari-style tents with expansive decks that soak up the dramatic views and wildlife. The camp's dining, lounge and bar areas offer scenic relaxation and are complemented by an infinity pool, a sundeck and a fire pit. Activities include a walking tour of the Victoria Falls, game drives within the National Park, river cruises, fishing excursions, guided nature walks, tours of Livingstone town and museum, and visits to Mkuni Market and a local village. A 25-minute helicopter flight over the Falls and into the Batoka Gorge offers a spectacular birds-eye view of the river and waterfall. [Toka Leya Website](#)



Private charter flight to Johannesburg.

The Safari ends in Johannesburg

End of services



Tour is inclusive of the following:

- Private safari guide services for the entire itinerary
- Private vehicle at all safari destinations
- All accommodation costs
- All meals, beverages, game-viewing activities and excursions as detailed in the itinerary
- Laundry costs where this service is included
- Private charter flights throughout the itinerary
- Airport departure taxes for commercial flights
- All road transfers to / from hotels, lodges and airports
- Park and conservation fees
- Local taxes and levies

Tour is exclusive of the following:

- Flights to and from Africa
- Private trip and medical insurance cover
- Visa costs
- Personal purchases
- Telephone, internet, business centre and room service charges
- Meals as noted such as lunch and dinner at city hotels
- Premium beverages (unless otherwise noted)
- Excursions not detailed on the itinerary
- Laundry costs where this service is not included
- Airport departure taxes not included in air ticket cost
- Gratuities
- Any other costs of a personal nature
- Credit Card Fees
- New taxes, levies, fuel or industry increases that are beyond the control of Beat About The Bush Safaris.