

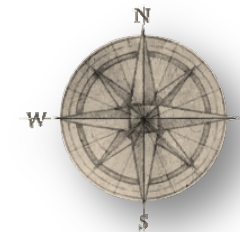
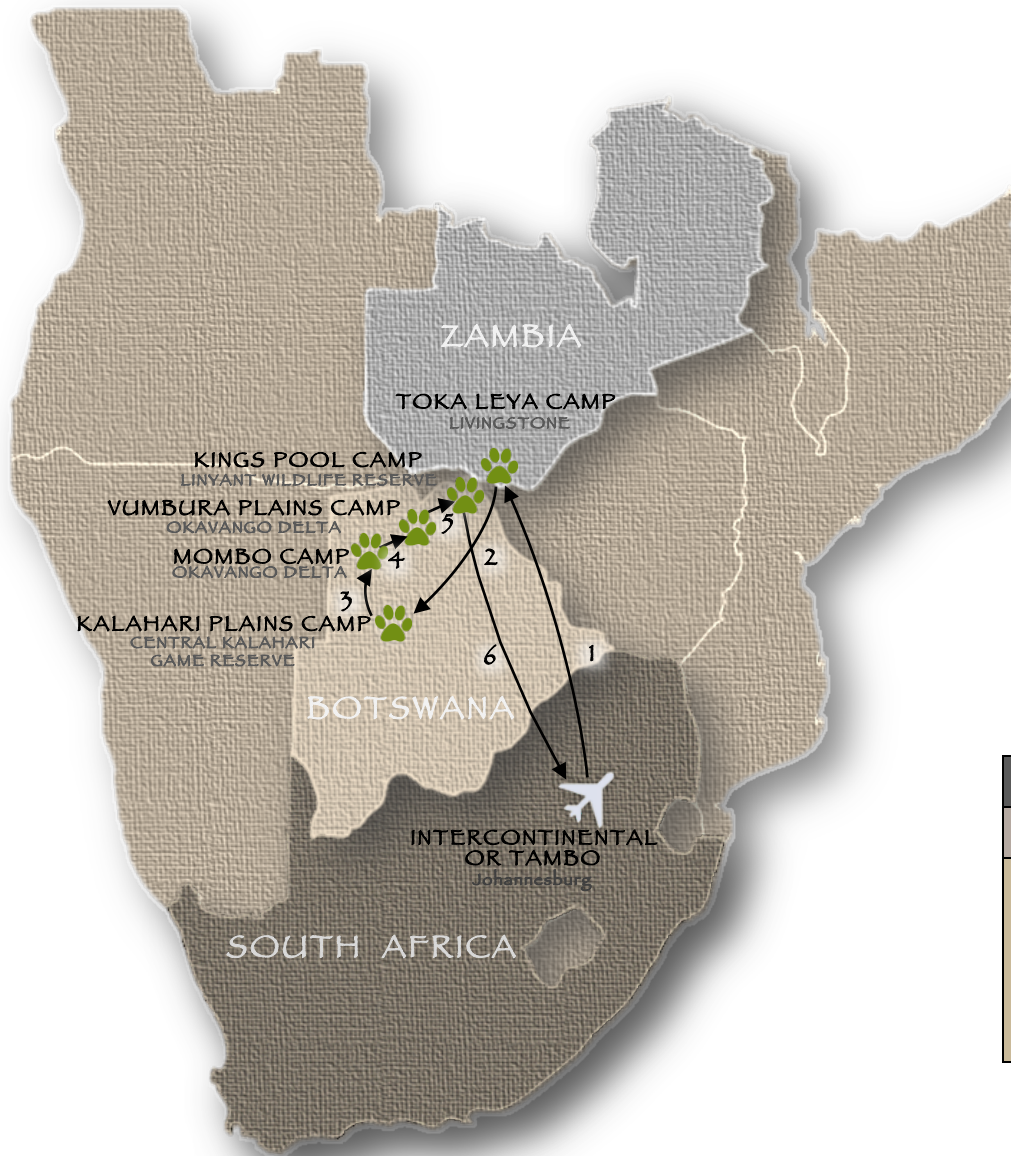
Private Plane Safari



Botswana and Victoria Falls



BEAT ABOUT THE BUSH TOURISM SERVICES

Website: www.beataboutthebush.co.za **E-mail:** safaris@beataboutthebush.co.za **Tel:** +27 83 442 0652



LEGEND:	
	Game Reserves/National Parks
	Arrival & Departure Destination

TRIP SUMMARY: 11 NIGHTS / 12 DAYS	
BOTSWANA & VICTORIA FALLS	
Day 1	InterContinental O.R. Tambo Airport Hotel, Johannesburg
Day 2 & 3	Toka Leya Camp, Livingstone
Day 4 & 5	Kalahari Plains Camp, Central Kalahari Game Reserve
Day 6 & 7	Mombo Camp, Okavango Delta
Day 8 & 9	Vumbura Plains Camp, Okavango Delta
Day 10 & 11	Kings Pool Camp, Linyant Wildlife Reserve
Day 12	Depart for home from Johannesburg International Airport

Safari starts in Johannesburg, South Africa

Johannesburg – InterContinental O.R. Tambo Airport Hotel – 1 Night

Included: All meals, accommodation

Johannesburg

Johannesburg is the second largest city in Africa. Known as the greatest gold-mining area on earth, this vibrant city is not just an industrial giant; it is the heart of the country's economy. From traditional 'muti' (medicine) shops to exclusive boutiques in upmarket malls, theatres, museums, cultural villages, restaurants, beautiful walks in indigenous gardens and more, Johannesburg is a diverse cultural melting pot, deserving of its name of 'iGoli' or 'City of Gold'.

InterContinental O.R. Tambo Airport Hotel

This 5-star hotel is conveniently situated at the airport hub and is only a 5-minute walk from the arrivals hall. The well-appointed rooms are tastefully decorated with subtle influences of Africa. Spacious showers with massage showerheads, comfy king beds with fluffy duvets, blackout curtains and soundproofing ensure a night of relaxation. [InterContinental O.R. Tambo Airport Hotel website](#)



Private charter flight to Livingstone, Zambia – followed by a road transfer to the lodge.

Adjacent to Mosi-oa-Tunya National Park, Livingstone – Toka Leya Camp – 2 Nights

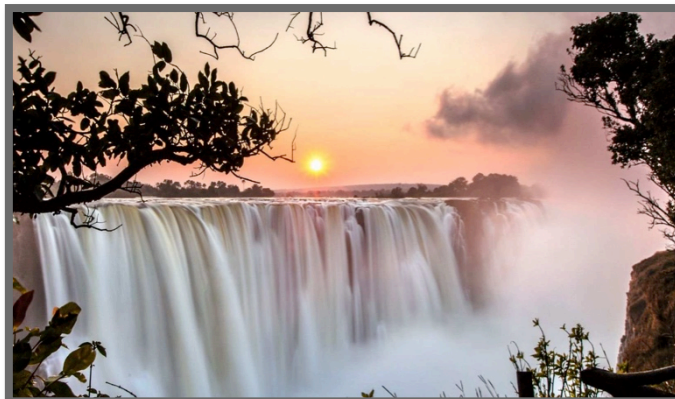
Included: All meals, local beverages, laundry service, daily activities, helicopter flight, private guide & private vehicle

Livingstone and Mosi-oa-Tunya National Park

The town of Livingstone has become Zambia's tourist capital. Livingstone is situated a short distance from Victoria Falls, the largest single waterfall in the world by volume in peak flood and a member of the old Seven Natural Wonders of the World. Columns of spray can be seen from many miles away as 750 000 tons of water plummet over the edge every minute at the height of flood season. The Falls are 1 mile (1,5km) wide and average 330 feet (100m) high. Mosi-oa-Tunya National Park abuts the town and is home to a wide diversity of animals including the country's only white rhino. Most visitors are drawn to Livingstone for Victoria Falls, but the town has attractions of its own, most notably an interesting colonial history combined with a very African ambience.

Toka Leya Camp

Toka Leya Camp overlooks the mighty Zambezi River and some of its islands and is on the unfenced border of the National Park. The camp consists of 12 spacious en-suite safari-style tents with expansive decks that soak up the dramatic views and wildlife. The camp's dining, lounge and bar areas offer scenic relaxation and are complemented by an infinity pool, a sundeck and a fire pit. Activities include a walking tour of the Victoria Falls, game drives within the National Park, river cruises, fishing excursions, guided nature walks, tours of Livingstone town and museum, and visits to Mkuni Market and a local village. A 25-minute helicopter flight over the Falls and into the Batoka Gorge offers a spectacular birds-eye view of the river and waterfall. [Toka Leya Website](#)



Private charter flight to the Central Kalahari Game Reserve.

Central Kalahari Game Reserve – Kalahari Plains Camp – 2 Nights

Included: All meals, local beverages, laundry service, daily activities, private guide & private vehicle

Central Kalahari Game Reserve

The Central Kalahari Game Reserve (CKGR) is the largest game reserve in southern Africa (52,800 km²) and for many years was closed to the public. It was finally opened in 1996 for camping only and the first permanent camps have made an appearance in the last few years. It can therefore rightly lay claim to being one of Africa's last true wild areas. The CKGR is a semi-arid area, rather than a true desert, and although there is very little annual precipitation and no standing water for most of the year, the area is characterized by fossil riverbeds and gently rolling fossilized dunes that have been stabilized by grasses, scrub and trees. Annual rainfall transforms this arid landscape into a verdant green blanket scattered with shallow, temporary pools of water called pans. Herds of game are attracted to the short, sweet grasses and are followed by the predators, making this area one of the best for game viewing through the latter parts of the rains and into early winter. The CKGR is a hotspot for viewing the legendary black-maned lion, brown hyena, bat-eared fox and cheetah.

Kalahari Plains Camp is situated in the north-eastern part of the reserve on the edge of one of the ancient 'dry' river valleys called Deception Valley. This camp comprises eight en-suite canvas units with a sleep-out above each from which to enjoy moonlit or star-studded nights. The main area consists of a lounge and dining area with a swimming pool and deck. [Kalahari Plains Camp Website](#)



Private charter flight to the Mombo Concession in the Okavango Delta.

Okavango Delta – Mombo Camp – 2 Nights

Included: All meals, local beverages, laundry service, daily activities, private guide & private vehicle

Okavango Delta

This water wonderland is one of the true jewels of Africa and a photographer's dream with a flood season area of over 3 million acres (1.2 million ha) of seasonal floodplains, permanent lagoons and lush tree islands. Over 450 species of birds and a myriad of game species are found in the area. The core protected area of the Okavango is the Moremi Game Reserve which is surrounded by a 'buffer-zone' of wildlife management areas. Moremi Game Reserve was the first nature reserve proclaimed by an African tribe on their own land and is dominated by the 250 000 acre (101 000 ha) Chief's Island.

Mombo Camp

Mombo Camp is situated on Mombo Island, adjoining the northern tip of Chief's Island, and has access to 40 000 acres (16 000 ha) of prime wildlife area with some of the best wildlife viewing in Botswana year round. At Mombo the aim is to offer guests a wilderness experience that evokes the magic and mystique of the great African tented safaris of the early part of the last century, while providing modern day comforts. The main area is shaded beneath massive jackalberry trees and is comprised of a dining area, a bar and a lounge with a campfire in the centre. Seven luxurious safari tents on timber decks are furnished with a minibar and coffee station, an en-suite bathroom, fans and charging stations. Finally, each tent has a small lounge to relax and enjoy the views. Rules within the Moremi Reserve dictate that no night drives are allowed. Water levels are too low for boating activities. [Mombo Camp Website](#)



Private charter flight to Vumbura Plains Camp in the Okavango Delta – followed by a road transfer to the lodge.

Okavango Delta – Vumbura Plains Camp – 2 Nights

Included: All meals, local beverages, laundry service, daily activities, private guide & private vehicle

Vumbura Plains Camp

Vumbura Plains (pronounced *Vum-bera*) is a luxury tented camp situated in a private concession bordering the Moremi Game Reserve in the extreme north of the Okavango Delta. The concession, which is leased from the neighbouring community, includes a wide variety of habitats, diverse wildlife and an enormous traversing area of 130 000 acres (60 000 ha). The main activity at Vumbura Plains is game viewing in open 4X4 vehicles. Walks, mokoro (dug-out canoe) trips with a poler guide and boating in aluminium boats with outboard motors are also offered, enabling a closer and more unique wildlife experience. With lion, leopard, elephant, cheetah, African buffalo and all the plains animals (including rare antelope like red lechwe and sable), this camp offers an excellent all round wildlife experience in a remote and private part of the Okavango.

Vumbura Plains Camp comprises two separate seven-roomed satellite camps, each with its own raised dining, lounge and bar area tucked beneath a canopy of cool, shady, indigenous trees. Each large, luxurious room is raised off the ground on wooden decks and comprises a bedroom, lounge, shower and full en-suite bathroom. Outdoor showers are standard. The rooms are 'open' on three sides to feature magnificent vistas across the Okavango Delta floodplains. Each room also has a plunge pool and outdoor 'sala' – a comfortable area to lie and relax. [Vumbura Plains Camp Website](#)



Private charter flight to Linyanti Wildlife Reserve.

Linyanti Wildlife Reserve – Kings Pool Camp – 2 Nights

Included: All meals, local beverages, laundry service, daily activities, private car & private guide

Linyanti Wildlife Reserve

The Linyanti Wildlife Reserve is a private reserve bordering Chobe National Park's western boundary. The enormous reserve covers 125 000 ha (308 000 acres). There are a limited number of lodges and camps here, which creates an unrivalled atmosphere of remoteness and seemingly unlimited expanse. Although the concession lies within the greater Chobe National Park, it has a distinctly different ecosystem. The reserve comprises a varied and diverse selection of habitats that include floodplains and marshes, riverine forests, dry woodlands, grasslands, exotic palm islands and scrub vegetation, all of which support a high biodiversity of mammal species. With such an abundance of mammals, predators are prevalent in Linyanti including lion, cheetah, hyena, leopard and the endangered African wild dog. The area also harbours one of the densest dry season concentrations of elephant in the world.

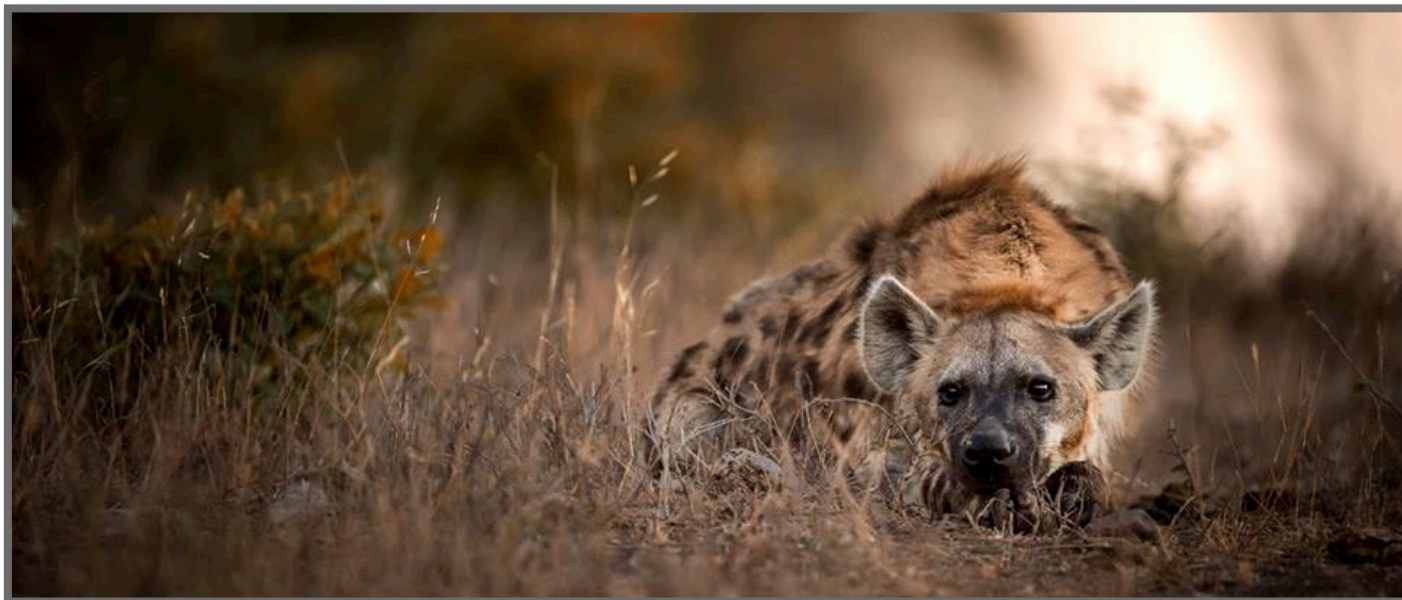
Kings Pool Camp overlooks the Kings Pool Lagoon in the Linyanti Wildlife Reserve. The camp's nine luxurious tents (including one family unit) each boast a large bedroom area and lounge leading onto a veranda with a private plunge pool and thatched sala from which to soak up the views. The en-suite bathrooms have double showers and hand-basins, as well as an outdoor shower. The spacious main area comprises a lounge, dining room and a convivial bar beautifully set on expansive raised decks. There is also a pool and an open-air 'kgotla' (meeting place) for evening dining under the stars. [Kings Pool Camp Website](#)



Private charter flight to Johannesburg.

The Safari ends in Johannesburg

End of services



Tour is inclusive of the following:

- Private safari guide services for the entire itinerary
- Private vehicle at all safari destinations
- All accommodation costs
- All meals, beverages, game-viewing activities and excursions as detailed in the itinerary
- Laundry costs where this service is included
- Private charter flights throughout the itinerary
- Airport departure taxes for commercial flights
- All road transfers to / from hotels, lodges and airports
- Park and conservation fees
- Local taxes and levies

Tour is exclusive of the following:

- Flights to and from Africa
- Private trip and medical insurance cover
- Visa costs
- Personal purchases
- Telephone, internet, business centre and room service charges
- Meals as noted such as lunch and dinner at city hotels
- Premium beverages (unless otherwise noted)
- Excursions not detailed on the itinerary
- Laundry costs where this service is not included
- Airport departure taxes not included in air ticket cost
- Gratuities
- Any other costs of a personal nature
- Credit Card Fees
- New taxes, levies, fuel or industry increases that are beyond the control of Beat About The Bush Safaris.