

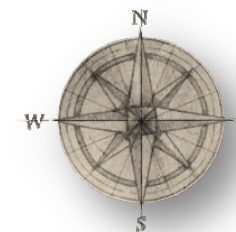
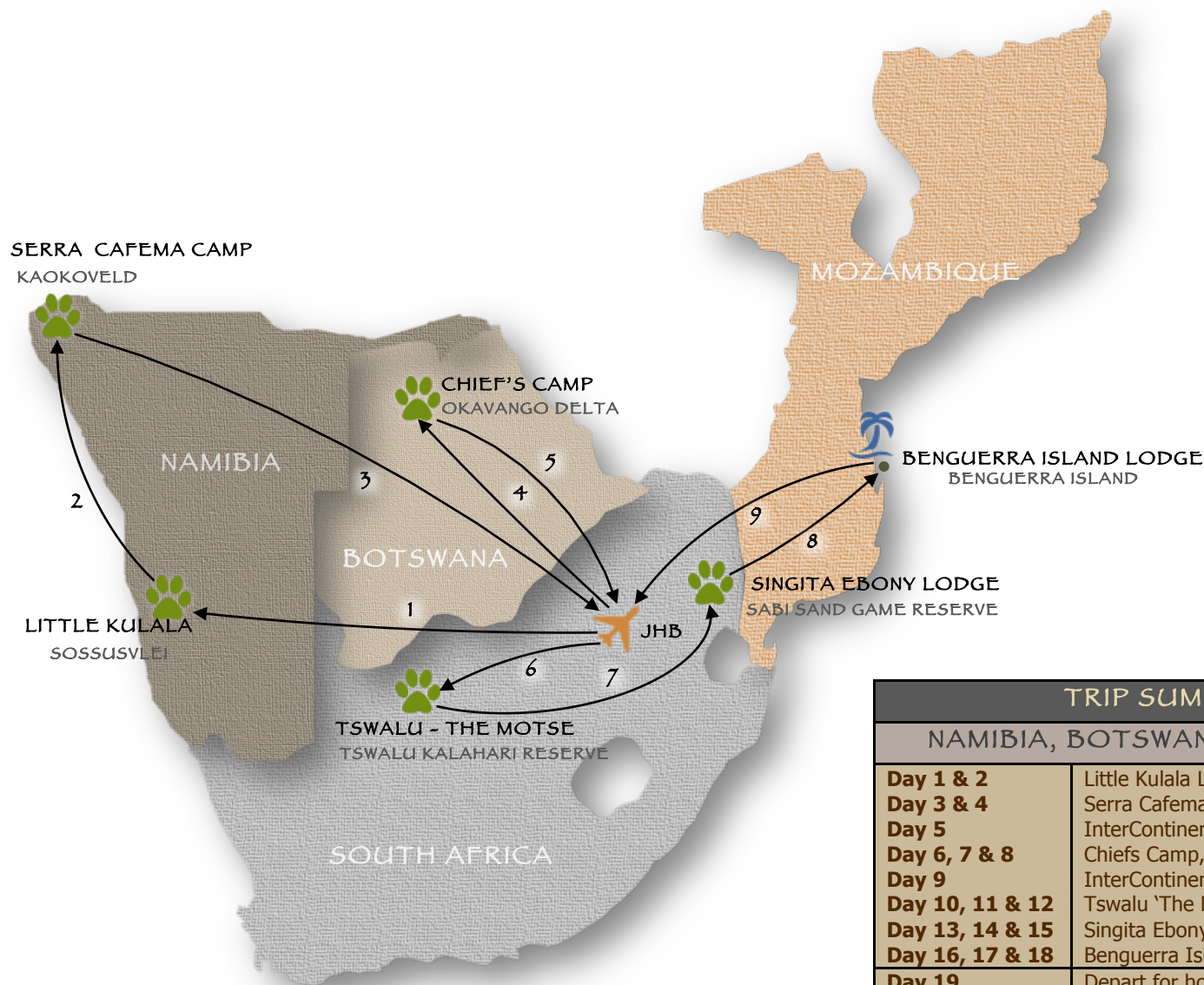
Southern Africa

Namibia, Botswana, South Africa & Mozambique



BEAT ABOUT THE BUSH TOURISM SERVICES

Website: www.beataboutthebush.co.za **E-mail:** safaris@beataboutthebush.co.za **Tel:** +27 83 442 0652



LEGEND:	
	Game Reserves/National Parks
	Beach Destination
	Arrival & Departure Destination

TRIP SUMMARY: 18 NIGHTS / 19 DAYS	
NAMIBIA, BOTSWANA, SOUTH AFRICA & MOZAMBIQUE	
Day 1 & 2	Little Kulala Lodge, Kulala Wilderness Reserve, Sossusvlei
Day 3 & 4	Serra Cafema Camp, Marienfluss Conservancy, Kaokoveld
Day 5	InterContinental O.R. Tambo Airport Hotel, Johannesburg Airport Precinct
Day 6, 7 & 8	Chiefs Camp, Okavango Delta
Day 9	InterContinental O.R. Tambo Airport Hotel, Johannesburg Airport Precinct
Day 10, 11 & 12	Tswalu 'The Motse', Tswalu Kalahari Reserve, Northern Cape
Day 13, 14 & 15	Singita Ebony Lodge, Sabi Sand Game Reserve, southern Greater Kruger
Day 16, 17 & 18	Benguerra Island Lodge, Benguerra Island, Bazaruto Archipelago
Day 19	Depart for home from Johannesburg International Airport

Safari starts in Johannesburg, South Africa

Scheduled commercial flight to Hosea Kutako International Airport, Windhoek followed by light aircraft transfer to Kulala Wilderness Reserve

Kulala Wilderness Reserve – Little Kulala Lodge – 2 Nights

Included: All meals, local beverages, laundry service, daily activities, private guide & private vehicle* (*with private tour option).

Sossusvlei – Namib-Naukluft National Park

One of the oldest, driest and most pristine areas on Earth, the Namib Desert is a world of vast spaces, endless horizons, dramatic desert-scapes and jagged mountain heights. Known as “The Living Desert”, the dunes of the Namib abound with desert-adapted beetles, spiders, lizards, gerbils, golden moles and other creatures, all leaving their tell-tale tracks in the fine sand. The plains and dry watercourses are home to oryx, springbok, plains zebra, kudu, ostrich and giraffe. The fascinating desert-adapted wildlife, combined with the endless space, utter tranquility and extraordinary light, make this one of Africa’s most compelling wilderness regions.

Sossusvlei, located in the red dunes of the Namib, is a pan that has formed where the natural course of the ephemeral Tsauchab River is blocked by the mass of sand that originally came up from the south. This ‘sand-sea’ stretches for 400km (240 miles) in a narrow band about 100km (60 miles) wide between the icy cold Atlantic Ocean to the west and the escarpment to the east. The cold Benguela current flowing up along the coast ensures that there is no rain, hence the dunes reach the sea in one of the most inhospitable areas of the world. The path of the Tsauchab is flanked by some of the tallest dunes in the world, some of which rise majestically to over 1000ft above the surrounding plains, before ending as a ‘blind’ river at a salt-encrusted pan named Sossusvlei. This is one of a number of spectacular pans in the area that are surrounded by dunes and often have their surfaces studded by the ghostly figures of 500-year old dead Camelthorn trees.

The Kulala Concession on which the lodge is situated encompasses an area of over 80 000 acres of remote desert landscape to the east of (and with private entrance to) the famous Sossusvlei area of the National Park. Activities include morning visits to the massive dunes and salt pans at Sossusvlei, nature walks and nature drives during which you can enjoy the spectacular desert scenery and learn more about the sparse, but wonderfully adapted fauna and flora of the area. Activities at extra cost include hot air balloon trips over the concession (weather dependent), horse-riding and quad-bike rides in the desert. If you are lucky enough to visit when the moon is not too bright, then you will witness spectacular night skies.

Little Kulala is a luxurious desert retreat situated in the private 27 000-hectare (67 000-acre) Kulala Wilderness Reserve. Accommodation consists of 11 climate-controlled, thatched "kulalas" (the word means 'to sleep') which merge impeccably into the desert landscape, each with private plunge pool, both indoor and outdoor showers and a rooftop star bed for romantic star gazing. An elegant entertainment area includes a library, wine cellar, craft boutique, lounge and dining areas. Activities include game drives as well as a walk to Dead Vlei and the Sesriem Canyon. [Little Kulala Lodge Website](#)



Light aircraft transfer to Doro Nawas, followed by connecting light aircraft transfer to Kaokoveld.

Marienfluss Conservancy, Kaokoveld – Serra Cafema Camp – 2 Nights

Included: All meals, local beverages, laundry service, daily activities, private guide & private vehicle* (*with private tour option).

Marienfluss Conservancy

This protected conservation area is the result of a partnership between the local indigenous inhabitants and private enterprise to ensure sustainability of the ecosystem and its wildlife in addition to empowering the people. The area is a mammoth 600 000 acres in extent and is dominated by soft sands, vast, ancient valleys that in good years have a covering of grass, fold mountains (metamorphic) and granite inselbergs. Wildlife is sparse but the sheer feeling of isolation and the unique birdlife and cultural possibilities make this a destination to be remembered.

Serra Cafema Camp

Undoubtedly one of the most remote camps in southern Africa, Serra Cafema is located in the extreme north-west of Namibia on the banks of the Kunene River in the Hartmann's Valley. Serra Cafema is an intimate, peaceful camp inspired by the area's Himba people, with a unique mix of rustic and luxury elements. Accommodation consists of eight en-suite riverside wood, canvas and thatched villas on spacious, elevated decks blended smoothly into the picturesque surroundings. The main area, comprises indoor and outdoor dining areas, a sunken lounge, library, curio shop and a swimming pool.

Activities include nature walks, birding (there are a number of very rare species here because of the unique habitat in the desert), boating on the river and carefully guided drives and quad-bike excursions that tread lightly on the dunes. A big highlight of this area is the possibility of seeing the nomadic Himba people (if they are in the area), arguably the last remaining truly nomadic people left in southern Africa. Guests would then have the opportunity to learn about their lifestyle and traditions. [Serra Cafema Camp Website](#)



Light aircraft transfer to Doro Nawas, followed by a connecting light aircraft transfer to Windhoek for connection to a scheduled commercial flight to Johannesburg International Airport.

Johannesburg Airport Precinct - InterContinental O.R. Tambo Airport Hotel – 1 Night

Included: Breakfast

Johannesburg

Johannesburg is the second largest city in Africa. Had it not been for the discovery of gold by prospector George Harrison though, the city probably wouldn't even be in existence. Harrison, who pegged the first claim on the reef, sold it for just £10 and disappeared without a trace! Known as the greatest gold-mining area on earth, this vibrant city is not just an industrial giant; it is the heart of the country's economy. From traditional 'muti' (medicine) shops to exclusive boutiques in upmarket malls, theatres, museums, cultural villages, restaurants, beautiful walks in indigenous gardens and more, Johannesburg is a diverse cultural melting pot, deserving of its name of 'Goli' or 'City of Gold'.

InterContinental O.R. Tambo Airport Hotel

This 5-star hotel is conveniently situated at the airport hub and is only a 5-minute walk from the arrivals hall. The well-appointed rooms are tastefully decorated with subtle influences of Africa. Spacious showers with massage showerheads, comfy king beds with fluffy duvets, blackout curtains and soundproofing ensure a night of relaxation. [InterContinental O.R. Tambo Airport Hotel Website](#)



Scheduled commercial flight to Maun International Airport, followed by a light aircraft transfer to the Okavango Delta.

Okavango Delta – Chief's Camp – 3 Nights

Included: All meals, local beverages, laundry service, daily activities, private guide* & private vehicle* (*with private tour option).

Okavango Delta

A maze of sparkling lagoons, meandering channels with papyrus-fringed banks and overgrown islands teeming with wildlife, Botswana's Okavango Delta lies like a sparkling jewel spread over the thirstlands and heart of the Kalahari Desert. The core protected area of the Okavango is the 1 million acre Moremi Game Reserve, the first nature reserve proclaimed by an African tribe on their own land and named in honour of one of the early chiefs. The central part of the Reserve is dominated by the 250 000 acre Chief's Island which used to be the sacred hunting ground of the tribal chiefs. Explore the Okavango Delta by mokoro (dug-out canoe), motorised boat, on foot or on game drive.

Named after Chief Moremi, **Sanctuary Chief's Camp** is located in the world-renowned Moremi Game Reserve. Chief's Island is one of the many islands created by the seasonal flood waters of the Okavango Delta and is well-known for the finest game viewing in Southern Africa. The ten luxury bush pavilions are nestled in a jackalberry and sausage tree woodland, each boasting their own private dining area, outside seating area, plunge pool, and beautiful bathrooms which offer a spacious outdoor shower and a large bath tub. The main area houses a bar area, orientation room, fitness centre, swimming pool, sitting room, curio shop, library, reception and both indoor and outdoor dining areas. [Chief's Camp Website](#)



Light aircraft transfer to Maun, followed by a scheduled commercial flight to Johannesburg International Airport.

Johannesburg Airport Precinct - InterContinental O.R. Tambo Airport Hotel – 1 Night

Light aircraft transfer from Johannesburg to Tswalu Kalahari Reserve.

Tswalu Kalahari Reserve – Tswalu 'The Motse' – 3 Nights

Included: All meals, local beverages, laundry service, daily activities, private guide* & private vehicle* (*with private tour option).

Tswalu Kalahari Reserve

This is South Africa's largest private game reserve, covering an area of over 220 000 acres. 'To restore the Kalahari to itself' is the motto of current owner Nicky Oppenheimer. This reserve offers an 'alternative' wilderness experience for visitors who have already been on a number of safaris, because it is a classic example of what is being done to transform old farms to their former wilderness glory and the focus is on research, giving the visitor the opportunity to spend time with experts trying to unlock the secrets of Kalahari species as diverse as sociable weavers and suricates (meerkats). The reserve is also a very important location for the breeding (in natural conditions) of endangered species such as black rhino and various antelope such as Sable, Roan and Tsessebe and as such, the lodge occurs in a 150 000 acre 'safe area' free of lions that would impact negatively on the stocks of these species, but where the African wild dogs and cheetah do occur. Lions and white rhino can be found in a separate 70 000 acre area where the habitat is more conducive to their existence.

Game drives, nature walks, visits to the suricates (meerkats) and night drives are offered. The suricates are a delight if you visit very early in the morning and this is one of the only places in Africa where you can get up close and personal on foot with these small creatures. Watch them basking in the morning and then perhaps follow them as they set off to forage. The night drives are also a real highlight as the Kalahari is one of the best places to see some of the more elusive nocturnal species that are difficult to spot in other safari destinations. You may be lucky enough to see porcupine, caracal (similar to lynx), brown hyena, aardwolf (a termite-eating hyena), aardvark and African wild cat.

'The Motse' Lodge

Meaning 'village' in Setswana, this beautiful 20-bed lodge is located at the base of the Korannaberg Mountains with views across the expansive Kalahari grasslands. Each stone, clay and thatch suite boasts an open fireplace, indoor & outdoor shower, dressing room and private sundeck overlooking the

waterhole that attracts a variety of Kalahari animal species. The main guest areas comprise a variety of decks, infinity pool, spa, gym, a walk-in cellar, gift shop, library with satellite TV, broadband Wi-Fi throughout and a museum displaying local artefacts. [Tswalu 'The Motse' Website](#)



Light aircraft transfer to Johannesburg, followed by another light aircraft flight to Sabi Sand Game Reserve.

Sabi Sand Game Reserve – Singita Ebony Lodge – 3 Nights

Included: All meals, local beverages, laundry service, daily activities, private guide & private vehicle* (*with private tour option).

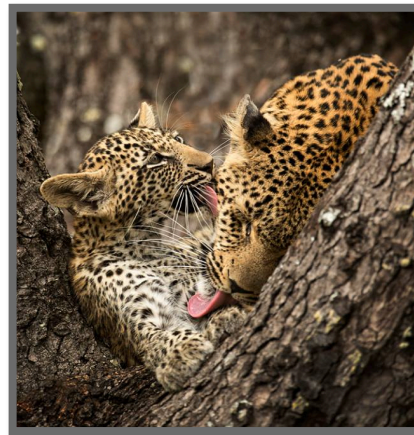
The Greater Kruger

The Kruger National Park is the second oldest National Park in the world and arguably the best-known of Africa's great wildlife sanctuaries. At 6 million acres, the Park is one of the largest in the world and has the greatest diversity of fauna and flora of any African park. A unique feature of the Kruger National Park is the inclusion (no physical barrier) along the western border of 650 000 acres of private conservation land into a mega-park called 'Greater Kruger'. Many of Africa's finest lodges are to be found in this private section which is divided into separately managed reserves, one of which is the famous Sabi Sand Reserve comprising 160 000 acres of prime wildlife land where your lodge is situated. The area is renowned for its big game viewing and the totally open vehicles, ability to follow big game off-road, night drives with spotlight to search for nocturnal species, and the contributory skills of some of the best wildlife trackers on the continent will make for a thrilling safari.

Singita Ebony Lodge reclines in the peaceful shade of jackalberry trees on the banks of the Sand River, in the heart of the Sabi Sand Game Reserve. Inspired by the romance and adventure of tented camps, explorers' abodes and campaign furniture, Singita Ebony is a fresh and contemporary interpretation of the classic safari lodge, combining tented camp and bush lodge style. Singita Ebony has 12 luxurious suites all with their own en-suite bathrooms with indoor and outdoor showers, an expansive living area with double-sided fireplace, minibar and fridge, air conditioning, overhead fans, direct dial telephones and private wooden leisure decks with heated private plunge pools.

The main lodge at Ebony has a beautiful lounge and dining area, situated on timber decks overlooking the Sand River, a bar area, swimming pool and traditional open-air boma, fully-equipped gym, health spa, wine cellar and boutique. There is an incredible gallery filled with African art and a well stocked library for those who wish to learn more about the area. Game drives, nature walks, community tours, mountain biking and archery are all offered.

[Singita Ebony Lodge Website](#)



Light aircraft transfer to Kruger Mpumalanga International Airport, Nelspruit, followed by a scheduled commercial flight to Vilanculos, Mozambique connecting on to a helicopter transfer to Benguerra Island.

Benguerra Island, Bazaruto Archipelago – Benguerra Island Lodge – 3 Nights

Included: All meals, local beverages, laundry service, daily activities, private guide & private vehicle* (*with private tour option).

Benguerra Island, Bazaruto Archipelago

Benguerra Island lies 14km (9 miles) north-east of Vilanculos, the nearest town on the mainland and site of the international airport. This picturesque island is renowned for its outstanding dive sites, unspoilt white beaches, and excellent fishing and is the second largest island in the Bazaruto Archipelago - a declared Marine National Park since 1971. The island is home to a selection of tropical wildlife, including turtles that nest on the outer shores while the crystal clear waters feature magnificent reefs and a range of whales, dolphins and protected dugongs.

Benguerra Island Lodge

This idyllic retreat comprises 15 rooms decorated in tropical chic with a distinctive African feel and reminders of the area's Portuguese heritage. Each room boasts lovely views with private decks and rim-flow pools, bathrooms with bath, indoor and outdoor shower, air-conditioning, overhead fans, mosquito nets, hair-dryer, mini safe and wi-fi. Guests looking to make the most of this marine paradise can make use of the included activities of snorkelling, sea kayaking, dhow cruises, castaway picnic, island expedition and local village tour. Optional activities at extra cost include scuba diving the magnificent reefs that are home to the turtles that nest nearby (learn to dive at the PADI dive centre); deep sea and saltwater fly fishing (catch-and-release); catamaran cruises and horse-riding. [Benguerra Island Lodge Website](#)



Helicopter transfer to Vilanculos for connection to a scheduled commercial flight to Johannesburg International Airport.
The Safari ends in Johannesburg, South Africa

End of services



Tour is inclusive of the following:

- Private safari guide services for the entire itinerary except for Mozambique (on private tours)
- Private vehicle at all safari destinations (on private tours)
- Shared vehicles at all destinations (on standard tours)
- All accommodation costs
- All meals, beverages, game-viewing activities and excursions as detailed in the itinerary
- Laundry costs where this service is included
- Internal / regional economy / coach flights* & shared charter flights
- Airport departure taxes for commercial flights
- All road transfers to / from hotels, lodges and airports
- Park and conservation fees
- Local taxes and levies

*** Please advise if you would prefer business class seats on regional flights – the costing will then be adjusted accordingly.**

Tour is exclusive of the following:

- Flights to and from Africa
- Private trip and medical insurance cover
- Visa costs
- Personal purchases
- Telephone, internet, business centre and room service charges
- Meals as noted such as lunch and dinner at city hotels
- Premium beverages (unless otherwise noted)
- Excursions not detailed on the itinerary
- Laundry costs where this service is not included
- Airport departure taxes not included in air ticket cost
- Gratuities
- Any other costs of a personal nature
- Credit Card Fees
- New taxes, levies, fuel or industry increases that are beyond the control of Beat About The Bush Safaris.

Tour is offered in the following options but can be customised for differing party sizes*

Standard Tour	Private Tour – 2 People	Private Tour – 4 People	Private Tour – 6 People
A	B	C	D

*** Please enquire for confirmed prices due to currency fluctuations.**